

The Cutting Edge

SPRING 2004

*Ice
Theatre
of
New York*

Ice Theatre of New York

"Artistic Director Moira North has incorporated forward-looking choreography for ice dancing with more conventional pieces, usually superbly performed."

(Hilary Ostlere, The Westsider)

"Gorgeous presentation of gorgeous skating, pure and simple."

(Jennifer Dunning, The New York Times)

"Their tireless devotion to artistry and the importance of creative expression have opened up all of our minds and imaginations to the limitless possibilities skating can inspire."

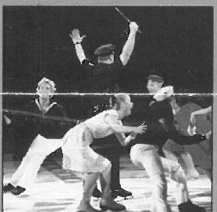
(Vera Wang, 2003 Autumn Gala)

INSIDE THIS ISSUE:



**2003 AUTUMN
FUNDRAISING GALA
in honor of
VERA WANG**

page 2



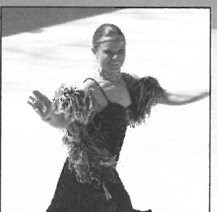
**HIGHLIGHTS
from the 2003-2004
Performance Season**

page 3



**OUTREACH
PROGRAMS**

page 4



SPECIAL EVENTS

page 4

Dear Friends,

It is hard to believe that it was 20 years ago that I, along with a dedicated band of skaters, dancers and artists, began creating the first works for Ice Theatre of New York! For a number of years we worked between midnight and five in the morning (without compensation) on unsold ice, donated to our fledgling project. This dedication is testimony to the passion and devotion of Ice Theatre's early members.

Ice Theatre started with both an artistic and a humanistic purpose. Our first aim was to develop figure skating as performance art, distinct from competitive athletic events or commercial entertainment programming. Secondly, we wanted to provide a new means of expression at the same time deepening the skills of figure skaters, both amateur and professional. We accomplished these goals through experimentation, collaboration, teaching and, above all, through performance.

Some of our early apprentices and Company members have started companies in their own communities. Their efforts truly acknowledge the importance of their experience with Ice Theatre of New York – and also the greatest indication of our success.

Continuing recognition by dance and skating critics, multi-levels of funding, and the interest of readers such as you, have validated the efforts of all of us committed to this movement.

Today, we are still dreaming about and developing artistic ice possibilities on a national and international scale. This year we are celebrating our history as well as all those who have contributed to sustaining and growing the Company these past 20 years. We look forward to the exciting performance possibilities in our future!

As we continue exploring the endless possibilities of movements and artistic performances on ice in this, our 20th season, I thank you for your continued interest and support!

— MOIRA NORTH

2003 Gala honoring VERA WANG

November 5, 2003
The Lighthouse, Chelsea Piers

All photos by Judith Angel

"It was one of the best
nights of my life"

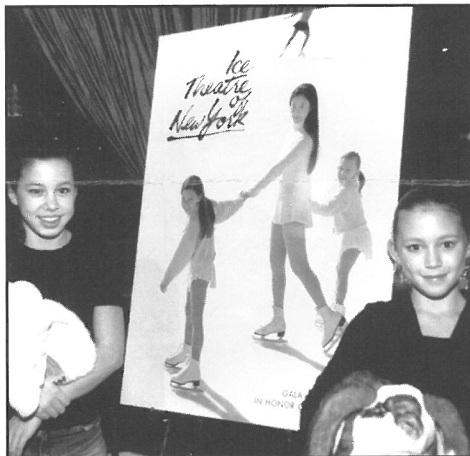
— Vera Wang



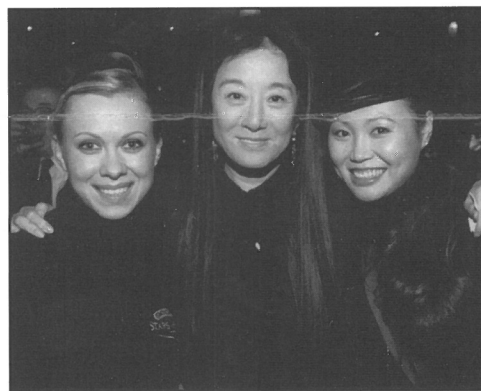
Vera Wang with Robin Wagner



Vera Wang with Doug Wilson and Peter Dunfield



Cecilia and Josephine Becker,
who performed at the Gala



Vera Wang with
Oksana Baiul and Lu Chen



Dorothy Hamill, Aja Zanova Steindler
and Dick Button

The piano for the cocktail hour during the 2003 Gala was generously contributed by Steinway & Sons, coordinated by Representative Mariele Keymel (212) 332-0115.



STEINWAY HALL

THE FLAGSHIP SHOWROOM OF STEINWAY & SONS

*The World's Largest Selection of Steinway pianos
set in a unique environment for the finest selection experience.*

Call or visit for a complimentary
"Eight Keys to Buying a Piano" guide and color catalog.

STEINWAY PIANOS BOSTON PIANOS ESSEX PIANOS

STEINWAY HEIRLOOM COLLECTION • CERTIFIED FACTORY RESTORED STEINWAYS • HOME & CONCERT RENTALS

A landmark showroom at 109 West 57th Street, NYC
Mon. - Fri. 9-6; Sat. 9-5; Sun. 12-5 • 1-800-235-1045
www.steinway.com

© 2003 Steinway & Sons. Steinway, the Lyre symbol and the Heirloom Collection are registered trademarks.

Pier 59, Suite 5911
New York, NY 10011
P: 212.929.5811
F: 212.929.0105
www.icetheatre.org
E-mail: itny@icetheatre.org

FOUNDER/DIRECTOR
Moira North
ASSOC. ARTISTIC DIRECTOR
Doug Webster
ENSEMBLE DIRECTOR
Judy Blumberg
GENERAL MANAGER
Michiko Simanjuntak

CHAIRMAN
William Candee, III

VICE CHAIRMAN
Peter F. Eurich

PRESIDENT
Moira North

TREASURER
Mary Gaillard

BOARD OF TRUSTEES
George Akst
Rose Auslander
R. Palmer Baker, Jr.
William Beekman
Eri Chiang
Chip Connell
Joan Erdheim
Kathlin Feuerstein
Victoria Geduld
James C. Goodale
Ruth Legon
Lea Ann Miller
Caroline Moore
Rhea Schwartz
JoAnna Mendl Shaw
Jan Staller
Joel Stern
Adele Hall Sweet
Debra Lewin Weiner

ADVISORY COUNCIL
Elise Bernhardt
Dick Button
Ann Carlson
Jay Colton
Patrick Hourcade
Meredith Monk
Joan Scribner
Ken Shelley



COMPANY NEWS

The Ice Theatre Ensemble in *Do Da Day* by David Liu. Photo by Arthur Donowski

Ice Theatre welcomes new Company members **Kate Liberman, Trina Pierre, Arnold Myint and Line Haddad**. Except for skating, all the new members came from completely different backgrounds. Kate, originally trained in both skating and ballet, is a pre-med student at Columbia University. Trina, previously trained by Gary Beacom and Gia Guddat, traveled with Disney on Ice's *Little Mermaid* before enrolling in Parsons School of Design to study fashion design. Arnold, who performed in many professional ice shows, recently finished attending the Institute of Culinary Education and is on his way to being a world-class chef and restaurateur. Line, a pair skater, was two-time French National Champion, one-time Israeli Champion and represented France in the European and World Championships and the Olympics. She is also fluent in English, French, Spanish and Russian! Line is getting married to Irwin Boutboul in Paris on June 13, 2004. Also getting married is General Manager **Michiko Simanjuntak** to Angelo Grasso on June 5, 2004 — right under the ice rink, at The Lighthouse. Will the bride "skate out"? **Susan Wilsey** and her husband Darren happily announced the birth of their son, Rocco Errett Wilsey, on Sunday, July 27, 2003. Susan recovered quickly and rejoined the Company on the ice for the Home Season in the fall.

Ice Theatre members traveled all over the world this past season. After finishing up assisting the choreography of *Lilo and Stitch* and *Peter Pan* in the fall with Disney on Ice, Associate Artistic Director **Doug Webster** toured with *Holiday on Ice* as Assistant Choreographer and Performance Director in the Netherlands, France, Switzerland and Mexico. **Florentine Houdiniere** made her debut as an adagio skater during a recent skating tour in France. **Daphne Johnson** had a blast during her term abroad in London. **Eve Chalom** and **David Liu** performed in a work from Venezuelan choreogra-

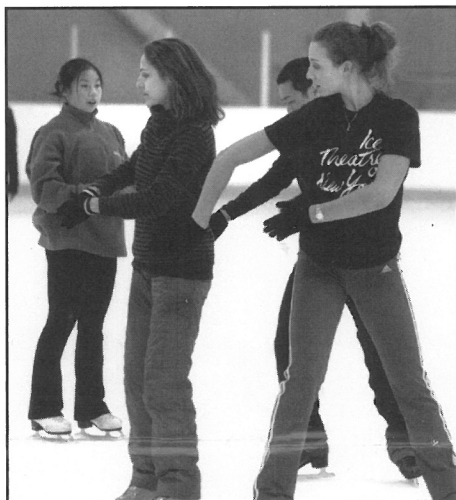
pher Carlos Orta at the Newsteps choreographers' series at the Mulberry Street Theater.

Kenny Moir is now the Director of Sky Rink's Competitive Figure Skating camp. Good luck, Kenny! **Tyrrell Gene** was busy coaching at Wollman Rink throughout the winter and recently came back from Montana after conducting a skating workshop.

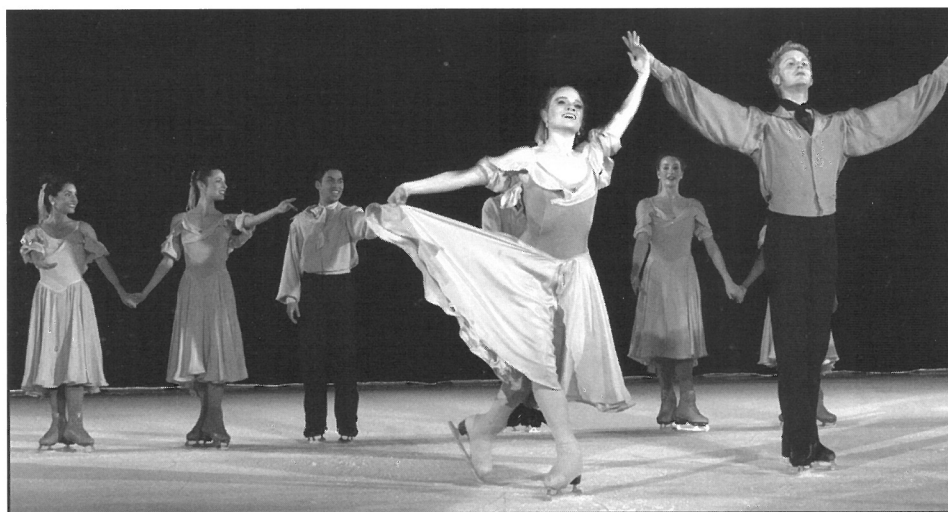
Kim Navarro earned her Bachelor degree in English and graduated Cum Laude from Columbia University in 2004. **Alyssa Stith** started her master's degree at NYU's Dance Department in the summer of 2003. Apprentice **Angela Chiang** followed suit by starting her first year as an undergraduate at NYU. Along with Angela, apprentices **Raye Levine, Heather Cookson Rothman, Annadella Subin** and **Erin Melikian** joined the Company members and choreographers in the creative process, educational workshops and performances during the Company's 2003 Summer Residency at the Jamestown Ice Arena. Heather started her first year at Columbia University right after the Residency; Annadella is heading to University of Chicago this fall; and Raye will attend Cooper Union.

During the past performance season Ice Theatre got a lot of help from great interns from all over the world: our 2003 spring intern **Jeniere Bailey**, a graduate of Virginia Commonwealth University, passed the torch to summer intern **Jae Hee Kim**, a senior at Smith College, originally from South Korea. NYU Senior **Christine Batten**, with her wit, calm, and sassy fashion sense, was a tremendous help during the Gala in honor of **Vera Wang**; and this spring **Roberta Braga**, a graduate of the renowned Bocconi University in Milan, joined us from Italy. **Carolyn Furay**, former production intern extraordinaire, made her professional debut with the company as the stage manager for our 2003 Home Season, and the proscenium stage performance at West Point.

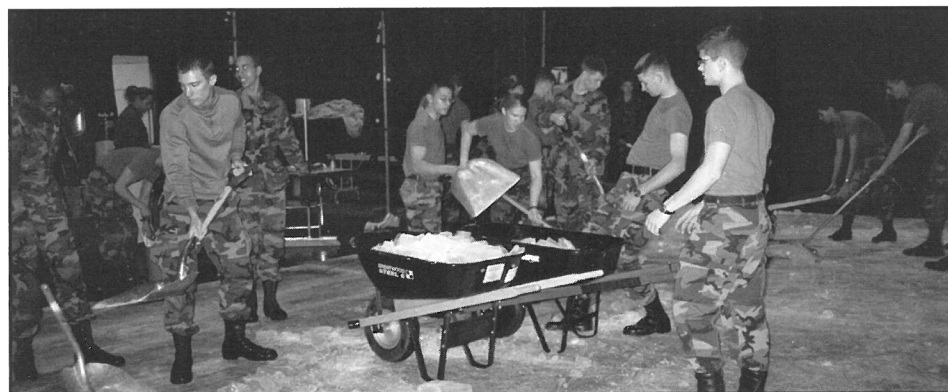
HIGHLIGHTS



Angela Chiang, Florentine Houdiniere, David Liu and Kate Liberman rehearsing *Do Da Day* at the Jamestown Ice Arena during the **2003 Summer Residency**.



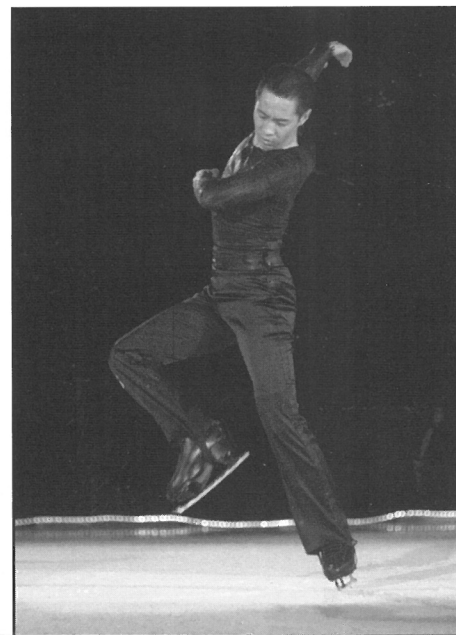
The Ice Theatre Ensemble in *Ice Moves* by **Jean-Pierre Bonnefoux**, staged by **Katherine Healy**. This work was originally created for World/Olympic Champion **John Curry** and his dance-on-ice company. The work was reset on the Ice Theatre ensemble through a commissioning grant from New York State Council on the Arts. Photo by Arthur Donowski.



Military cadets hammering and disposing ice after the performance at The Eisenhower Hall Theatre, West Point on November 15, 2003.



The 2003 Autumn Gala Performance in honor of Vera Wang. The Ice Theatre Ensemble with **Moira North, Vakhtang Murvanidze and Oksana Baiul; Silvia Fontana, Elena Leonova and Andrei Khvalko, David Liu, Lu Chen and Katherine Healy; Josephine and Cecilia Becker, Chris Colton; and Vera Wang**
Photo by Arthur Donowski.



David Liu in *El Duende* by Venezuelan choreographer **Carlos Orta**. Photo by Kenny Jacobson.

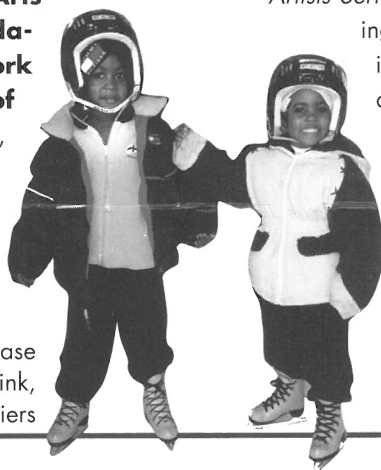


Kim Navarro and Trina Pierre in **Doug Webster's Purple Haze**, inspired by the music of Jimi Hendrix. Photo by Arthur Donowski.

EDUCATION AND OUTREACH

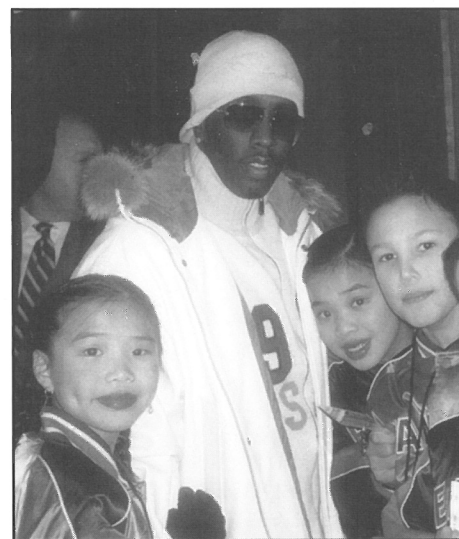
Implementing outreach programs had been tough during the past season due to a cut in a major educational funding for the Company. But Ice Theatre continued to forge ahead with all its educational and outreach programs, due to support from entities such as the **Leo Rosner Foundation, Sports and Arts in Schools Foundation, the New York City Department of Cultural Affairs,** and individuals contributing to outreach causes, such as Victoria and Buzzy Geduld.

Students at the Chase Festival at Sky Rink, Chelsea Piers

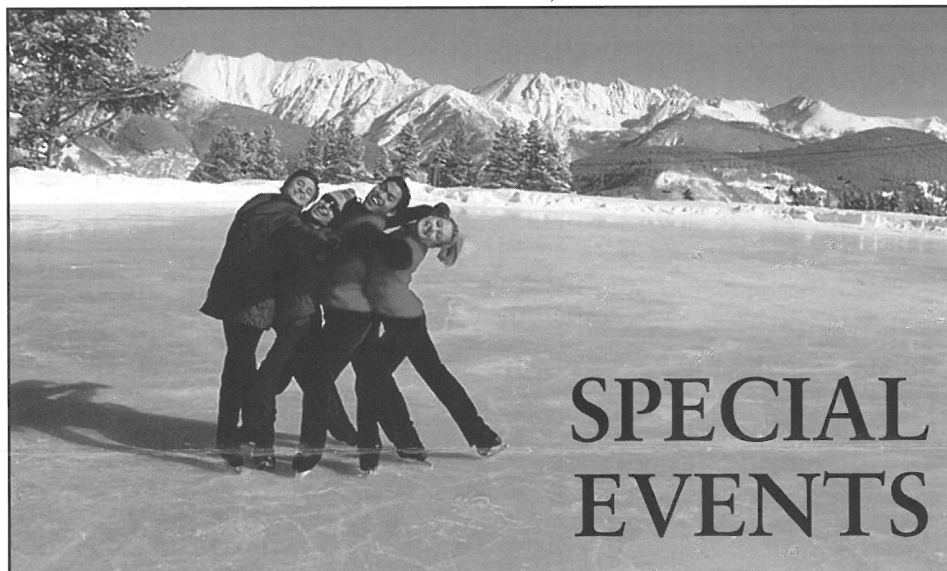


Ice Theatre continued to provide subsidized tickets to organizations such as Figure Skating in Harlem and High 5 Tickets to the Arts during the past Home Season. The Company also celebrated its fifth year of participating at the renowned **JPMorgan Chase Festival**, providing skating instruction to inner city public school students during their Spring Break.

This year also marks Ice Theatre's 10th season of the *New Works and Young Artists Series* at Riverbank State Park. Joining the Company this year were ice dancers **Kendra Goodwin** and **Brent Bommentre**, who ranked fourth during U.S. Nationals this year; Georgian Champion **Vakhtang Murvanidze**; prima ballerina **Katherine Healy**; and Olympian **David Liu**. This year approximately 1,000 individuals attended this Series.



Please help Ice Theatre further our mission to train young skaters, encourage emerging choreographers, and develop and educate new audiences for artistic figure skating by contributing to our outreach programs.



SPECIAL EVENTS

Line Haddad, Judy Blumberg, Arnold Myint and Kim Navarro during the *Colors of Winter* project. Photo courtesy of Randy Gardner.

The Company had a flurry of special event activities this past fall. Ice Theatre members, World Professional Pair Champions **Elena Leonova** and **Andrei Khvalko**, Georgian Champion **Vakhtang Murvanidze** and young apprentices dressed up as elves, lightened up The Rink at Rockefeller Plaza during the opening of the blockbuster movie, *The Elf*. A couple of weeks later, the rink was turned

into an "ice lounge" complete with Ice Theatre skaters dressed in sleek speed skating outfits for the rink opening, hosted by **Tishman Speyer** and sponsored by **Wachovia Bank**. Company skaters and apprentices also participated in the rink's annual tree-lighting ceremony.

Lighting up another tree, the **Riverbank State Park** invited Ice Theatre ensemble

members and young apprentices to perform in its annual holiday performance. The guest star of the performance was Rink Manager Darcel Michel, skating with Santa Babies' *Ice Angels*.

Performing at the **Ferragamo** holiday event at Wollman Rink this year were five-year-old Ice Theatre apprentice **Pippa Leigh**, and Vakhtang Murvanidze.

Sean John Boys approached Ice Theatre to create an ice performance for its holiday bash at The Rink at Rockefeller Plaza in December. Joining Ice Theatre on the ice was **P. Diddy** himself – swarmed by children asking for his autograph.

Wrapping up the holiday season, Ice Theatre participated in the **Nancy Kerrigan's Colors of Winter** project, to be aired in Cablevision's Voom TV service later on this year. The pieces Ice Theatre performed for the project were *Heart* by **JoAnna Mendl Shaw**, and *Draughtsman's Contract* by **Elisa Monte**.

During this performance season, Ice Theatre also performed for employees of **Lincoln Mercury, Merrill Lynch** and **NYU**.

For more information about Ice Theatre's special events, please call (212) 929-5811 or visit our website at www.icetheatre.org.



Pier 59, Suite 5911
NY, NY 10011
www.icetheatre.org



To learn more about the Company and its upcoming activities, please visit our website at www.icetheatre.org.

UPCOMING EVENTS:

2004 SUMMER RESIDENCY
Jamestown Ice Arena

20th ANNIVERSARY GALA
The Lighthouse, Chelsea Piers
October 13, 2004

2004 HOME SEASON
Sky Rink, Chelsea Piers

Subject to change. Please contact the office at (212) 929-5811 to confirm.

I WANT TO HELP ICE THEATRE THRIVE AND GROW!

Friend (\$50)	Patron (\$500)
Associate (\$100)	Ice Angel (\$1,000)
Sponsor (\$250)	Benefactor (\$2,500)

CHECKS, VISA, MC, AMEX ACCEPTED
CONTRIBUTION IS
FULLY TAX-DEDUCTIBLE,
payable to:

ICE THEATRE OF NEW YORK
PIER 59, SUITE 5911
New York, NY 10011

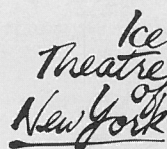
Ice Theatre also seeks
volunteers and more friends.
Please call the office at (212) 929-5811

ACKNOWLEDGEMENTS

Ice Theatre of New York wishes to thank the contributions of all its supporters, and acknowledges the continuing support of:

American Insurance Group*
AOL/Time Warner Foundation*
AT&T Foundation*
Bossak/Heilbron Charitable Foundation
Chautauqua Region Community Foundation
City of NY/ Dept. of Cultural Affairs
Clorox*
Gebbie Foundation
Harlick and Company
The Johnson Foundation
JPMorgan Chase Foundation*
The Leo Rosner Foundation
Lisa McGraw Figure Skating Found.
NYC Department of Cultural Affairs

New York State Council on the Arts
NYCT/Lila Wallace Theatre Fund
The Peterson Foundation
Restaurant Associates
Riverbank Skating Complex
The Sheldon Foundation
Skating Club of New York
Sky Rink, Chelsea Piers
Sony Pictures Entertainment*
Sports & Arts in Schools Foundation
The Rink at Rockefeller Plaza
Riverbank State Park
Sky Rink, Chelsea Piers



MERCHANDISE Available

T-Shirts (\$15 each)
Black w/White Logo
White w/ Black Logo
Sizes:
Youth M and L
Adult S, M, L and XL

Add Postage
& Handling: \$5

The Cutting Edge

Editorial Board & Contributors

Beth Hurwitz
Moira North
Michiko Simanjuntak

Design

Scott Schwartz

The Cutting Edge copyright © 2004,
Ice Theatre of New York, Inc.

To obtain permission to reproduce or to purchase images in this newsletter, please contact our office at Ice Theatre of New York, Pier 59 Suite 5911, New York, NY 10011 or call (212) 929-5811.

The Cutting Edge welcomes article submissions.

*Matching grants. Check if your company matches contributions to nonprofit organizations.